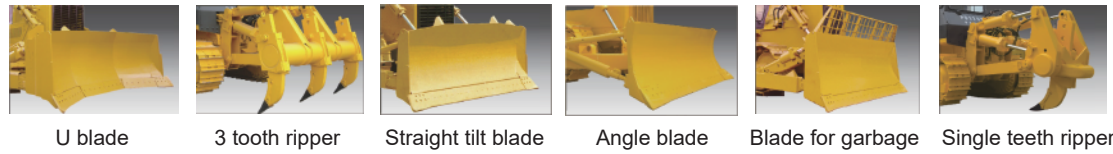


# GTY220

## Optional Attachment



U blade    3 tooth ripper    Straight tilt blade    Angle blade    Blade for garbage    Single teeth ripper



Wheel Loader



Motor Grader



Excavator



Backhoe Loader



Vibratory Roller



Truck Crane



Bulldozer



Paver



Skid Steer

**SINOMACH**

**SINOMACH**

**SINOMACH-HI INTERNATIONAL EQUIPMENT CO.,LTD.**

(额定功率) Rated power: 175kW@1800rpm (整机重量) Weight: 23500kg



- The machine features reasonable layout, excellent performance and advanced technology.
- Higher engine power reserves efficiency, bigger torque output, lower fuel consumption, while better reliability.
- Hydraulically controlled drive, automatically speed regulating and non-stop gear shifting.
- The final drive uses triangle Spline and tip relief, crowned gear drive to enhance the balance and the stability of the load of transmission Part.
- The novel hexahedral cab offers excellent visibility, the powerful ventilation and unparalleled dust-free.



SINOMACH-HI INTERNATIONAL EQUIPMENT COMPANY LIMITED

Add: No. 898, West Huanghe Road, Changzhou, Jiangsu,  
P.R. of China

P.C: 213136

Tel: 86-519-86781288 86752400

Fax: 86-519-86781387

Http://www.sinomach-hi.com

E-mail: sales@changlin.com.cn service@changlin.com.cn



**国机重工集团国际装备有限公司**  
**SINOMACH-HI INTERNATIONAL EQUIPMENT CO.,LTD.**

**发动机(ENGINE)**

型号.....康明斯 Cummins NT855-C280S10  
 Model.....康明斯 Cummins NT855-C280S10  
 型式.....直列、四冲程、水冷、PT泵喷射、涡轮增压  
 Type.....Straight vertical, four-stroke, water cooling, PT pump injection, turbocharged  
 额定功率 Rated power .....175kW  
 额定转速 Rated Speed .....1800r/min  
 缸数-缸径×行程 .....6-φ139.7×152.4mm  
 Number of cylinders-bore×stroke.....6-φ139.7×152.4mm  
 启动方式.....24V,11kW 启动马达  
 Starting method .....Starting motor 24V,11kW  
 蓄电池.....24V(12V×2)-195Ah  
 Battery.....24V(12V×2)-195Ah  
 空气滤清器.....干式、水平式、带空气除尘器  
 Air cleaner.....Dry horizontal typewith precleaner  
 最低燃油消耗量 Min fuel consumption ratio.....218g/kw·h

**传动装置 TRANSMISSION SYSTEM**

液力变矩器.....三元件, 单级, 单相  
 Torque converter.....3-element, single-stage, single-phase  
 变速箱.....行星齿轮, 多片离合器, 液压结合强制润滑式, 前进三档后退三档  
 Transmission.....Planetary gear, multiple-disc clutch, hydraulic actuated, forced lubrication by gear pump, 3 forward and 3 reverse speeds  
 中央传动.....螺旋伞齿轮、飞溅润滑  
 Bevel gear.....Helical bevel gear, splash lubricated  
 转向离合器.....湿式多片离合器, 弹簧压紧, 液压分离  
 Steering clutch.....Wet, Multiple disc, Spring loaded, hydraulically released  
 转向制动器.....湿式带制动、液压助力操纵、阀内联动  
 Steering brake.....Wet, band brake, operated with hydraulic booster and valve inner linkage  
 最终传动.....直齿轮, 二级减速, 飞溅润滑  
 Final drive.....double reduction, splash lubricated

**行驶速度 TRAVEL SPEED(km/h)**

	1st	2st	3st
前进 Forward	3.6	6.5	11.2
后退 Reverse	4.3	7.7	13.2

**工作装置液压系统**

**HYDRAULIC SYSTEM OF WORK EQUIPMENT**

工作压力 Working pressure..... 14Mpa  
 额定流量 (2000r/min) .....262L/min  
 油泵 Pump.....齿轮泵 Gearpump  
 操作阀.....手动滑阀式 伺服操纵  
 Control valve.....Hand-operated plunger sarvo controlling

**行走装置 UNDER CARRLAGE**

驱动轮 Sprocket.....镶块式大链轮 Segmented  
 支重轮数 (每侧) .....6(4单, 2双)/8(5单, 3双)  
 Number of track rollers(each side) .....6(4Single, 2double)/8(5Single, 3double)  
 张力机构 Track tension.....黄油涨紧 Hydraulic-adjusted  
 \*驱动轮, 支重轮, 托轮和引导轮均采用浮动油封  
 Floating seals are used in all sprockets, track rollers, carrier rollers and front idlers

**工作装置 WORK EQUIPMENT**

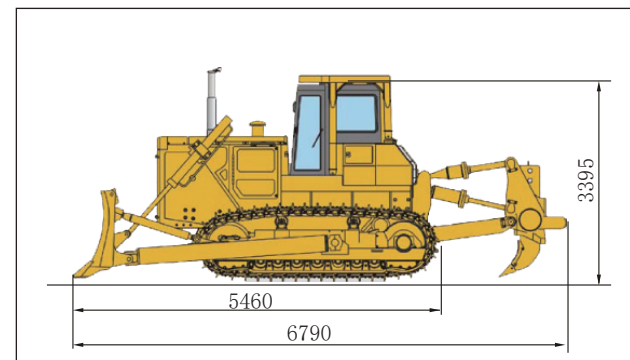
推土板形式 Blade type.....	直倾铲 Straight-tilt	角铲 Angle	半U铲 Semi-U
宽 Width.....	3725mm	4365mm	3725mm
高 Height.....	1315mm	1055mm	1374mm
最大切土深度 Max.drop below ground...	538mm	535mm	540mm
最大侧倾量 Max.Tilt.....	>735mm	>500mm	>755mm
铲刀容量 Blade capacity.....	6.4m³	4.7m³	7.5m³

**松土器 RIPPER**

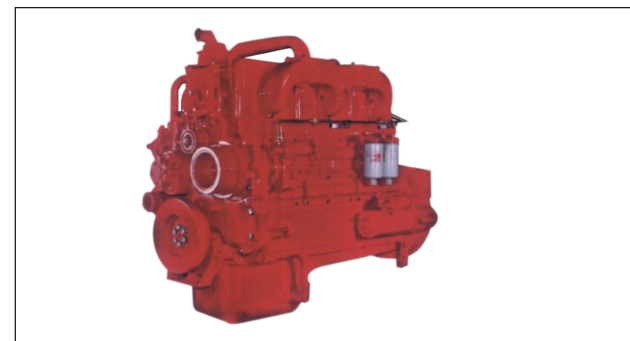
型式 Type.....单齿Single/三齿Three Shank  
 最大松土深度 Max.dig below ground.....695/666mm  
 最大提升高度 Max.lift above ground.....515/555mm  
 重量 Weight.....2453/2495mm

**履带 TRACK**

型式 Type.....密封式 单履齿 Sealed, single grouser		
	GTU220	GTU220S
节距 Track pitch.....	216mm	216mm
宽度 Track width.....	560mm	910mm
履带板数 (每侧) Number of track shoes(each side)...	38	45
履带接地长度 Length of track on ground...	2730mm	3480mm
离地间隙 Ground clearance.....	405mm	450mm
履带中心距 Track gauge.....	2000mm	2250mm



**Engine**

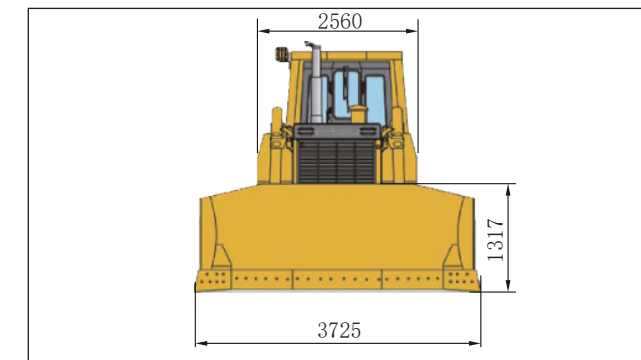


- Pulse exhaust manifold for improving performance and emission. With a high torque reserve and a low speed under the maximum torque condition for a good adaptation.
- High quality cast iron and special designed valve guide for the seal performance and durability.
- Robust and precise balance design for crankshaft.
- Advanced turbocharger and air-air aftercooler technology.
- 4 valves per cylinder for high power and low fuel consumption.

**Final drive**



- The final drive uses triangle Spline and tip relief, crowned gear drive for enhanced balance and the stability during power transmission, lower noise, excellent reliability and added life.



**Torque Converter**



- The hydraulic torque converter for GTU220 is a newly developed product with the improvement made to the material, process and layout based on introduced Japan KOMATSU technology.
- It features simple architecture, easy maintenance, low noise, excellent reliability, stepless speed regulating which ensure perfect match to the machine for an outstanding traction and a stable transmission.

**Gearbox**



- Hydraulic controlled gearshift is realized by operating the control valve, and without having to stop the machine, when operated with the torque converter to save operator effort.
- The transmission is combined with four planets lines and a rotary lock-up clutch, multiple disc clutch hydraulic controlled release, forced lubrication, with 3 speeds forward and 3 speeds backward.