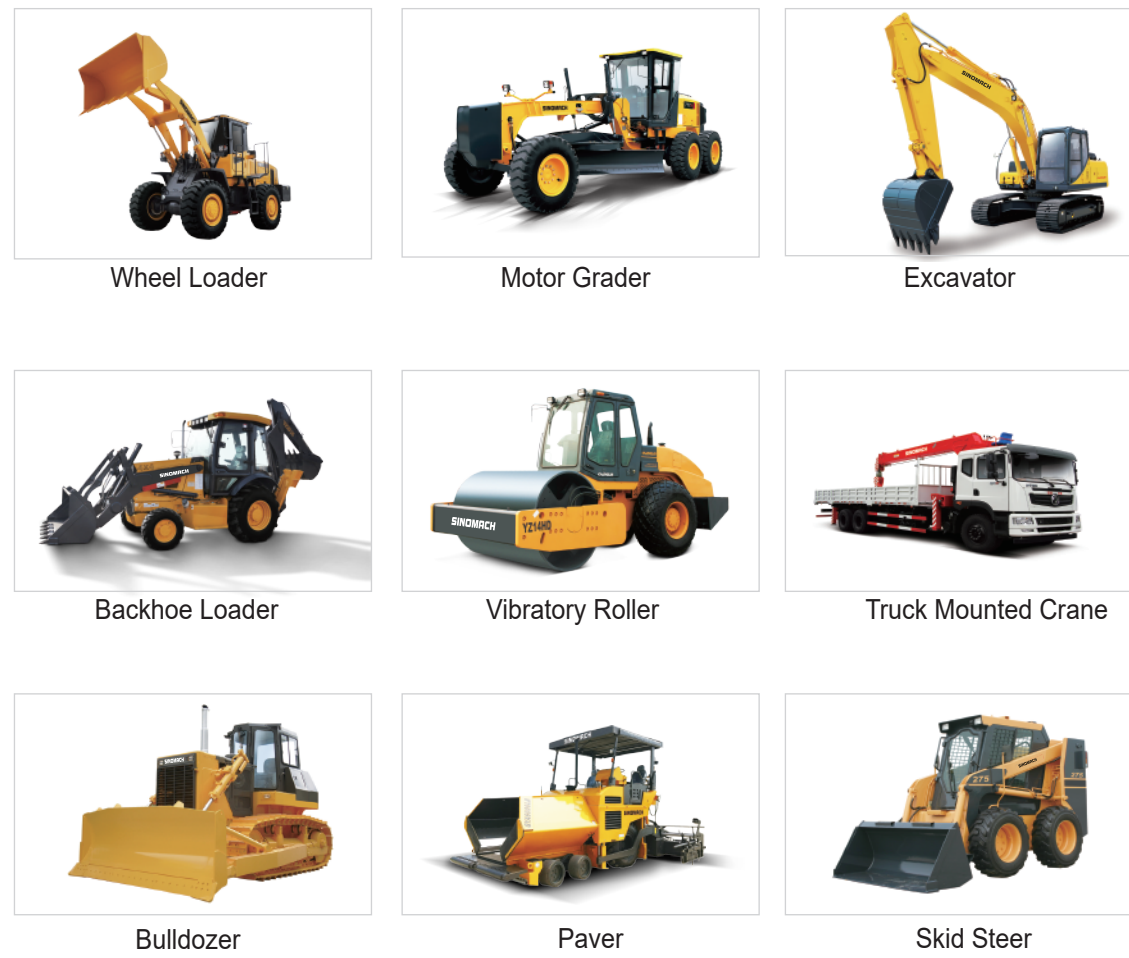


Optional Attachment



额定功率(Rated Power):97kW (Cummins) /92kW (WeiChai) @2200rpm 操作重量(Operating Weight):10200Kg 额定斗容(Rated Bucket Capacity):1.7m³



- Equipped with WeiChai or Cummins Engine.
- 4 forward 2 reverse power shift transmission.
- Combined seal cylinder obtains high seal performance and more reliability.



SINOMACH-HI International Equipment Co.,Ltd.

Add:No.898,Huanghe Road(West),Changzhou City,
Jiangsu Province,China.
P.C:213136
Tel:86-519-86781288 86752400
Fax:86-519-86781387
Http://www.sinomachglobal.com
E-mail:sales@changlin.com.cn service@changlin.com.cn

发动机(Engine)

型号.....康明斯 6BT5.9 / 潍柴 WP6G125E22
 ModelCummins 6BT5.9/WeiChai WP6G125E22
 型式.....直喷、涡轮增压、水冷
 Type.....Direct injection, turbocharged, water cooling
 额定功率Rated Power..... 97/92kW
 额定转速Rated Speed..... 2200rpm

变速系统 (Transmission System)

变矩器型式.....单级单相三元件
 Torque converter type...Single stage, single phase and 3-elements
 冷却方式.....油冷压力循环式
 Cooling mode.....Oil cooling pressure circulating
 变速箱型式.....圆柱斜齿轮平行轴式
 Transmission type.....Cylindrical helical gear parallel shaft type
 档位 (前进/后退).....前四后二
 Shifts (Forward/Backward).....F4/R2

行驶速度(km/h) Traveling speed	I	II	III	IV
前进 Forward	7.8	14.7	23.5	41.2
后退 Reverse	10.8	31.6		

驱动桥 (Axles)

最大牵引力 Max. drawing force96kN
 主传动速比 Gear ratio of main drive.....4.222
 轮边减速比 Gear ratio of hub reduction..... 4.8
 最大爬坡能力 Max. gradient ability.....30°

转向系统 (Steering System)

型式.....中间铰接、负荷传感全液压转向
 Type.....Middle articulated frame, load sensing full hydraulic steering
 转向角 Steering angle..... ± 38°
 最小转弯半径Min.steering radius (Center of front wheel)4885mm
 系统压力 System pressure.....16MPa
 发动机额定转速时的流量.....110L/min
 Flow rate at engine rated speed.....110L/min
 转向油缸数-缸径×行程.....2-φ70×357mm
 No.of cylinders-Bore×Stroke.....2-φ 70×357mm

工作装置 (Working Equipment)

最大掘起力 Max.breakout force.....96kN
 卸载高度 Dumping clearance.....2934mm
 卸载距离 Dumping reach.....1043mm
 倾翻载荷 (全转向) Tipping load full turn5880kg

工作液压系统 (Working Hydraulic System)

型式 Type.....双手柄软管操纵, 可选先导操纵
 Double handle flexible shaft control, Pilot control optional
 系统压力 System pressure.....16MPa
 发动机额定转速时的流量.....220L/min
 Flow rate at engine rated speed.....220L/min
 油缸数量-缸径×行程 No. of cylinders-Bore×Stroke
 举升油缸 Lifting cylinder.....2- φ125×697mm.
 翻斗油缸 Tilting cylinder.....1- φ150×434mm.
 提升时间 Lifting time.....5.2s
 下降时间 Lowering time.....3.0s
 卸载时间 Dumping time.....1.1s

轮胎 (Tyre)

轮胎规格 Tyre size.....17.5-25-12PR

制动系统 (Brake System)

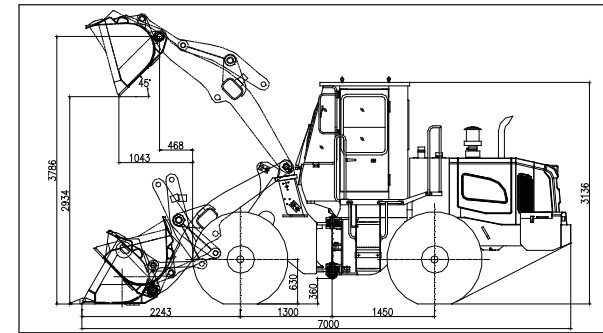
行车制动.....气顶液回轮制动
 Service Brake.....Air assisted oil.4wheel brake
 停车制动.....手动软管控制制动器
 Parking brake.....Manual air-controlled actuate drum brake
 act as emergency brake.

油量 (Refill Capacity)

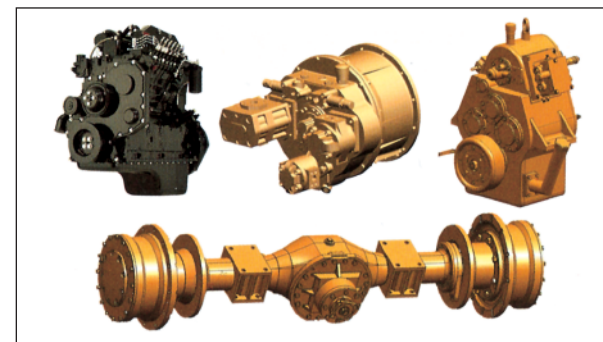
燃油箱 Fuel tank.....130L
 发动机曲轴箱 Engine oil... 13.5L (Cummins) /17L (WeiChai)
 双变系统 T/C and T/M.....38L
 液压油箱 Hydraulic tank.....120L
 前后桥 F/R axles15L/15L

驾驶室 (Cabin)

Vibration-absorbed humanistic cabin and streamline dashboard provide low noise,comfortable operation and wide eyeshot.

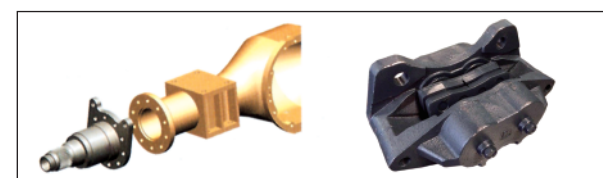


Best Power Performance



- Adopted Cummins or WeiChai engine that features large power reservation, low oil consumption and good power performance.
- Internationally sourced bearing in crucial places of T/C & T/M and driving axle ensures high reliability.
- Long-time tested YUNYU brand driving axles more suitable for tough working sites.

Reliable Brake System

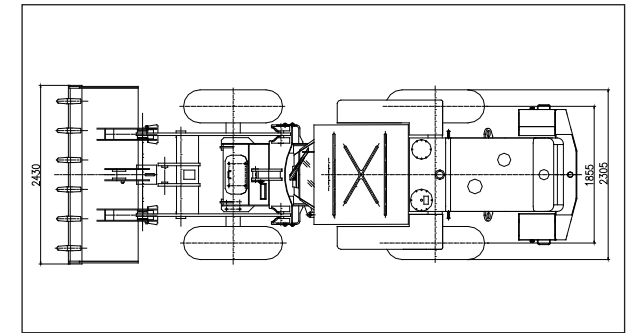


- Axle housing and hub reduction adopted separate structure that features low maintenance cost.
- Dual piping service brake with caliper disc brake ensures safety and reliable.

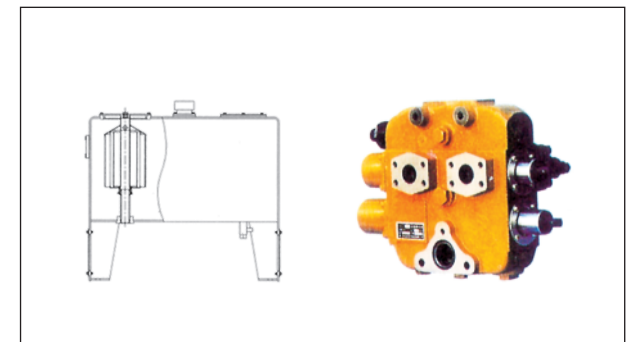
Comfortable Cabin



- Cabin featured luxury interior decoration and beautiful appearance and good eyeshot.

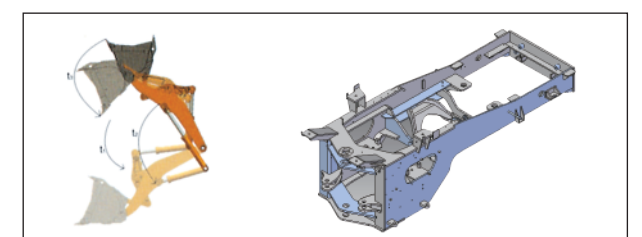


High Efficiency Hydraulic System



- Working system adopted independent hydraulic that features simple structure and high stability and low maintenance cost.
- Pipe joints adopted advanced sealing method ensure better sealing effect.
- Hydraulic tank with vacuum device ensures easy maintenance and fixing of hydraulic system.

Heavy-duty Working Equipment



- The optimized strengthened front/rear frame was more solid and durable,single-plate structure of rear frame reduce distortion and irregular welds and greatly promote reliability.
- The working equipment with optimized design of single swing arm has big break force and high working efficiency.



Wheel Loader Motor Grader Excavator Backhoe Loader Vibratory Roller Bulldozer

Construction Machinery