

957Z

SINOMACH

SINOMACH

SINOMACH-HI INTERNATIONAL EQUIPMENT CO.,LTD.

额定功率(Rated Power):162kW@2200rpm 操作重量(Operating Weight):17200Kg 额定斗容(Rated Bucket Capacity):3.0m³

Optional Attachment



侧卸
Side-dump Bucket



加长臂
Extension Arm



石油管夹具
Petroleum-pipe Clamp



枝桠材夹具
Branch Clamp



木爪
Log Clamp



小容量夹具
Small capacity clamp



大容量夹具
Large capacity clamp



岩石斗 (2.2m³)
Rock Bucket



煤斗 (3.8m³)
Coal Bucket



矿砂斗 (2.2m³)
Ore Bucket



加大斗 (4.5m³)
Large Capacity Bucket



Wheel Loader



Motor Grader



Excavator



Backhoe Loader



Vibratory Roller



Truck Crane



Bulldozer



Paver



Skid Steer



- 4 forward & 3 reverse power shift transmission
- KD switch operate easily and efficiently
- Load-sensed full hydraulic steering system dual-pump confluent flow working hydraulic & steering system
- Combined seal cylinder obtains high seal performance and more reliability



SINOMACH-HI INTERNATIONAL EQUIPMENT COMPANY LIMITED

Add:No.898,Huanghe Road(West),Changzhou City,
Jiangsu Province,China.

P.C:213136

Tel:86-519-86781288 86752400

Fax:86-519-86781387

Http://www.sinomach-hi.com

E-mail:sales@changlin.com.cn service@changlin.com.cn



国机重工集团国际装备有限公司
SINOMACH-HI INTERNATIONAL EQUIPMENT CO.,LTD.



发动机(Engine)

型号.....上柴 SC11CB220G2B1/康明斯 6LTAA9.3 220
 Model.....SHANGCHAI SC11CB220G2B1/Cummins 6LTAA9.3 220
 型式.....直喷、涡轮增压、水冷/空空中冷
 Type.....Direct injection, turbocharged, water cooling/air to air cooling
 额定功率 Rated Power.....162/160kW
 额定转速 Rated Speed.....2200rpm



变速系统 (Transmission System)

变矩器型式.....三相单级
 Torque converter type3-elements, single stage
 冷却方式.....压力油循环
 Cooling mode.....Pressure oil circulating
 ZF 变速箱型式.....动力换挡, 圆柱直齿长啮合
 ZF Transmission type.....power shift, spur gear constant-mesh
 档位 (前进/后退)前后四三
 Shifts(Forward/Backward).....F4/R3
 行驶速度(km/h) Traveling speed

	I	II	III	IV
前进 Forward	6.8	12.2	24.3	35
后退 Backward	6.8	12.2	24.5	



驱动桥 (Axles)

加强型干式制动前后桥.....Strengthened dry-type brake front and rear axles.
 最大牵引力 Max. drawing force.....165kN
 主传动速比 Gear ratio of main drive.....4.625
 终传动速比 Gear of ratio of final reducer.....4.9286
 最大爬坡能力 Max. gradient capacity.....30°



转向系统 (Steering System)

型式.....车架铰接, 全液压转向
 Type.....Middle articulated frame. Full-hydraulic Steerin
 转向角 Steering angle.....38°
 最小转弯半径 Min. steering radius at the center of outside tire
 铲斗外沿 Outside of bucket6851(mm)
 前轮胎外沿 Outside of rear wheel6238(mm)
 系统压力 System pressure.....16MPa
 转向油缸数-缸径×行程2-φ90×435mm
 No. of cylinders-Bore x Stroke2-φ90×435mm



轮胎 (Tyre)

轮胎规格 Tyre size.....23.5-25-16PR



工作装置 (Working Equipment)

单摇臂高支点优化设计的工作装置, 自动放平作为选装件。
 Single swing arm high fulcrum working equipment, Automatic leveling device is an option.
 最大掘起力 Max. breakout force175 kN
 卸载高度 Dumping clearance.....3140mm
 卸载距离 Dumping reach.....1130mm
 倾翻载荷 (全转向) Tipping load full turn.....13000kg



工作液压系统(Working Hydraulic System)

型式 Type.....单手柄比例先导操纵 Single handle P.P.C
 系统压力 System pressure180kgf/cm²
 油缸数量-缸径×行程 No.-of cylinders Bore x Stroke
 举升油缸 Lifting cylinder.....φ160×90×810mm.
 翻斗油缸 Tilting cylinder.....φ180×90×563mm.
 提升时间 Lifting time.....≤5.3s
 下降时间 Lowering time.....≤3.1s
 卸载时间 Dumping time.....≤1.1s



制动系统 (Brake System)

行车制动.....钳盘式制动器, 气顶油四轮制动
 Service Brake...Caliper disc brake, Air over oil activate 4 wheel brake.
 停车制动.....鼓式制动, 手动控制切断气压制动
 Parking brake.....Drum brake, Manual control cutting-off air brake.



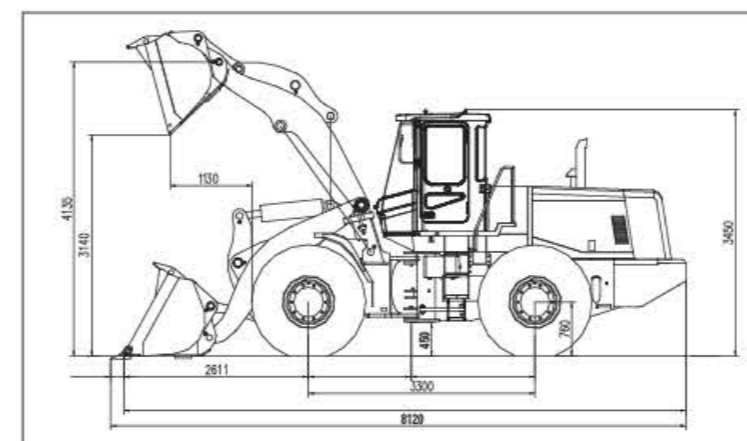
油量 (Refill Capacity)

燃油箱 Fuel tank.....280L
 发动机曲轴箱 Engine crank case.....24L
 双变系统 T/C and T/M.....45L
 液压油箱 Hydraulic tank.....230L
 前后桥 F/R axles36L

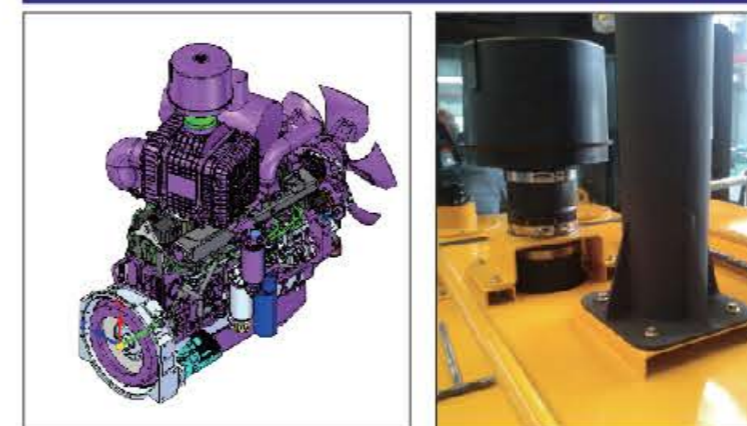


驾驶室 (Cabin)

Vibration-absorbed humanistic cabin with adjustable steering wheel and seat, and streamline dashboard provide low noise, air conditioning, comfortable operation and wide eyeshot.



Best Matched Power Train



- Adopted Shanghai SC11CB220G2B1/Cummins 6LTAA9.3 220Engine that features large power reservation, low consumption and good power performance.
- USES the cyclone filter, filtering effect is good, prefilter USES hierarchical fixed at the same time, high reliability.
- The exhaust tailpipe is designed to reduce the backpressure of the exhaust. Also adopting a fixed rating and high reliability.
- The back of the diesel tank is added to the back plate (fixed to the weight) to prevent the damage of the diesel tank from the accidental collision.

Advanced & Reliable Brake System

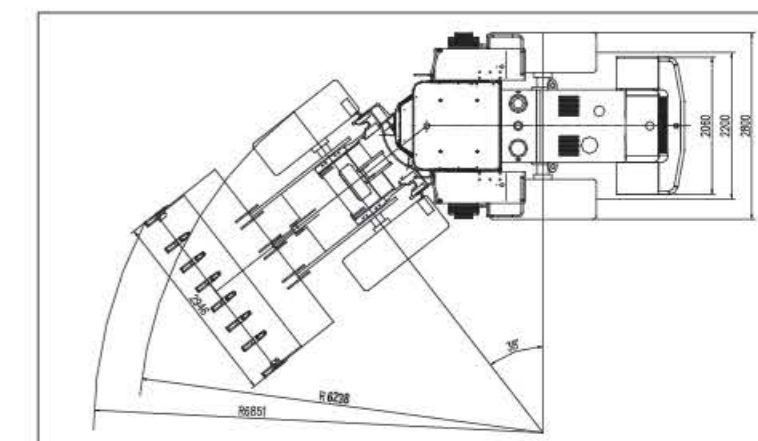


- Rearrangement under the existing conditions of the existing components.
- The booster pump is adjusted to the left side of the rear frame of the rear frame, which is easy to maintain, and the pump is marked with the filter core, which greatly extends the service life.

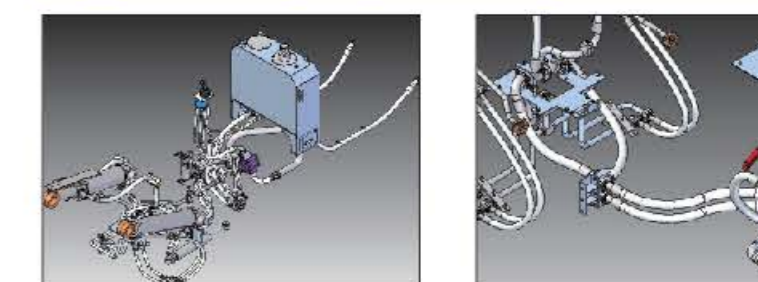
Comfortable Cabin



- Cabin featured luxury interior decoration and beautiful appearance and good eyeshot.

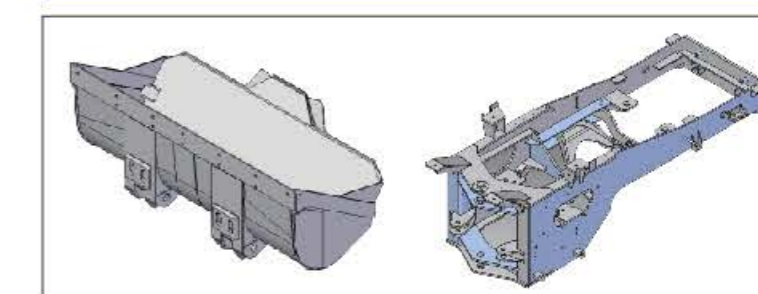


High Efficiency Hydraulic System



- The new design rehinged line, the direction is more reasonable.
- The pilot system adopts the accumulator scheme to reduce the power loss of the system.
- The pilot accumulator is installed in the right auxiliary box for maintenance.
- Selecting the distribution system, the configuration switch to the limiter, reducing the system shock.
- The flow amplification valve is positioned in the center of the frame to facilitate maintenance.

Heavy-duty Working Equipment



- Bucket, bucket bucket full rate rise, lead to the back of the bucket and material, increase the keep-off back in the back of the bucket, prevent material on safety accidents.
- Optimize the shape of the main side plate, which will be upgraded by two pieces of welding to the whole plate, reduce the weld and increase the strength.



Wheel Loader Motor Grader Excavator Backhoe Loader Vibratory Roller Bulldozer

Construction Machinery